



The Postulated Hepatotoxic Metabolite of Methimazole Causes Mitochondrial Dysfunction and Energy Metabolism Disturbances in Liver

Hossein Niknahad^{1,2}, Akram Jamshidzadeh^{1,2}, Reza Heidari^{1*}, Narges Abdoli³, Mohammad Mehdi Ommati⁴, Faezeh Jafari², Mehdi Zarei², Behnam Asadi²

¹Pharmaceutical Sciences Research Center, Shiraz University of Medical Sciences, Shiraz, Iran.

²Department of Pharmacology and Toxicology, School of Pharmacy, Shiraz University of Medical Sciences, Shiraz, Iran.

³Iran Food and Drug Administration (IFDA), Ministry of Health, Tehran, Iran.

⁴Department of Animal Science, School of Agriculture, Shiraz University, Shiraz, Iran.

Article Info

Article History:

Received: 23 August 2016

Accepted: 17 October 2016

ePublished: 30 December 2016

Keywords:

-Hepatic injury
-Antithyroids hepatotoxicity
-Mitochondrial dysfunction
-Endocrinology
-Drug-induced liver Injury (DILI)

ABSTRACT

Background: Although several cases of methimazole-induced liver injury are reported, but there is no clear idea on the mechanism of methimazole hepatotoxicity. N-methyl thiourea (NMT) is a postulated hepatotoxic metabolite for methimazole. The current investigation was designed to evaluate the effect of NMT on hepatocyte mitochondria as a target of xenobiotics-induced cellular injury.

Methods: Isolated liver mitochondria from healthy mice were incubated with NMT (10 μ M-160 mM) (*in vitro*). Furthermore, mice received NMT (10, 20, 40 and 80 mg/kg, i.p) then, their liver mitochondria were isolated and assessed (*in vivo*). Several mitochondrial indices including mitochondrial succinate dehydrogenase activity, mitochondrial membrane potential, mitochondrial swelling, reactive oxygen species, lipid peroxidation, and mitochondrial glutathione and ATP content were assessed.

Results: NMT caused a decrease in succinate dehydrogenase activity, an increase in mitochondrial ROS formation, lipid peroxidation, and swelling along with the collapse of mitochondrial membrane potential in both *in vitro* and *in vivo* experiments. Moreover, the level of glutathione and ATP was lower in NMT-exposed mitochondria.

Conclusion: Our data indicate that mitochondrial dysfunction might play a major role in the mechanism of liver injury induced by the methimazole hepatotoxic metabolite.

Introduction

Drug-induced liver injury (DILI) is a major clinical complication.^{1,2} Hepatotoxicity is a serious adverse effect associated with antithyroid drugs.^{3,4} Methimazole (Methyl mercapto imidazole, MMI, Figure 1) is the most prescribed drug against hyperthyroidism in human.⁵ On the other side, a number of adverse effects such as dermal and gastrointestinal disorders, loss of taste, and lupus-like syndrome are attributed to methimazole.^{6,7} Methimazole also causes dangerous and potentially fatal adverse effects such agranulocytosis and hepatotoxicity.⁸⁻¹⁰ Several cases of methimazole-induced liver injury have been reported.^{4,11-13} Although the precise mechanism(s) of methimazole-induced liver injury is not known, but oxidative stress and its associated events might

play a role in methimazole hepatotoxicity.¹⁴⁻¹⁶

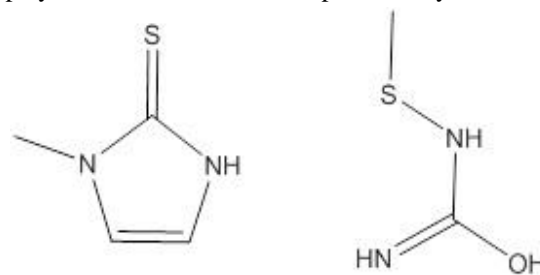


Figure 1. Chemical structure of methimazole (left) and N-methyl thiourea (right) as its proposed hepatotoxic metabolite.

The importance of drug bioactivation and its relevance to DILI has been widely investigated.¹⁷ Methimazole is metabolized by cytochrome P450

*Corresponding Author: Reza Heidari, E-mail: rezaheidari@hotmail.com

(CYP450) and flavin monooxygenases (FMO) enzyme to metabolites which are suspected to be cytotoxic.^{16,18} N-methyl thiourea (NMT, Figure 1) is the postulated toxic metabolite of methimazole in the liver as well as in other tissues.^{16,19} NMT secondary metabolites might also covalently bind to proteins, a mechanism which could be involved in olfactory system and liver injury after methimazole therapy.^{14,16,18}

Mitochondrial toxicity sometimes plays a pivotal role in the etiology of DILI.^{20,21} Drug-induced mitochondrial dysfunction might lead to cell apoptosis and finally organ injury.²⁰ Some investigations indicate the importance of mitochondrial injury in methimazole-induced toxicity.^{19,22} Previously we also found that methimazole caused mitochondrial membrane potential collapse in freshly isolated rat hepatocytes.^{19,23}

The current study was designed to evaluate the effect of NMT, as the hepatotoxic metabolite of methimazole, on liver mitochondria in two experimental models. The data obtain from this investigation will help to clear the mechanism of methimazole-induced liver injury, and perhaps the development of preventive/therapeutic strategies against this complication.

Materials and Methods

Chemicals

Sodium succinate, 4,2-Hydroxyethyl,1-piperazineethanesulfonic acid (HEPES), 3-(N-morpholino)propane sulfonic acid (MOPS), N-methyl thiourea, Dimethyl sulfoxide (DMSO), D-mannitol, Fatty acid-free bovine serum albumin (BSA) fraction V, 2-Thiobarbituric acid (TBA), 3-[4,5dimethylthiazol-2-yl]-2,5-diphenyltetrazolium bromide (MTT), dithiobis-2-nitrobenzoic acid (DTNB), Glutathione (GSH), 2',7'-Dichlorofluorescein diacetate (DCFH-DA), Malondialdehyde (MDA), Sucrose, Rhodamine123 (Rh 123), Coomassie brilliant blue, Ethylene glycol-bis (2-aminoethylether)-N,N,N',N'-tetraacetic acid (EGTA), and Ethylene diamine tetra acetic acid (EDTA) were purchased from Sigma Chemical Co. (St. Louis, MO, USA). Trichloroacetic acid (TCA) and hydroxymethyl aminomethane hydrochloride (Tris-HCl) were obtained from Merck (Dardamstd, Germany). Kits for evaluating plasma biochemistry were obtained from Pars Azmun (Tehran, Iran). All salts for preparing buffer solutions were of analytical grade and prepared from Merck (Dardamstd, Germany).

Animals

Male BALB/c mice (20-25 g, n=96) were obtained from Animal Breeding Center of Shiraz University of medical Sciences, Shiraz Iran. Mice were housed in cages on wood bedding at a temperature of

23±1°C and relative humidity of 40%. Animals had free access to tap water and a standard chow diet. Mice were handled according to the animal handling protocol approved by a local ethics committee at Shiraz University of Medical Sciences, Shiraz, Iran (95-01-36-11415).

In vivo experimental design

Mice (n=40) were treated with increasing doses of NMT (10, 20, 40 and 80 mg/kg, i.p). As there is no previous *in vivo* investigation on NMT toxicity, we used lower and higher doses of this chemical to evaluate its hepatotoxic profile. Moreover, a preliminary investigation revealed that NMT caused animals death at a dose of 100 mg/kg, i.p. Five hours after NMT administration, animals were sacrificed by cervical dislocation and their liver mitochondria was isolated based on a previously reported procedure.²⁴

Plasma biochemistry

A Mindray® BS-200 auto-analyzer and standard kits (Pars Azmun, Tehran, Iran) were used to evaluate plasma LDH, ALT, and AST in NMT-treated mice.

In vitro experiments

Isolated liver mitochondria from healthy mice (n=56) were incubated with different concentrations of NMT (10 µM-160 mM) and the mitochondrial indices were evaluated.²⁴

Liver Mitochondria isolation

Mice liver mitochondria were isolated as previously described.²⁴ Briefly, animals were sacrificed by cervical dislocation and their liver was rapidly excised and washed with ice-cold saline (sodium chloride 0.9%, 4°C).^{24,25} The liver was homogenized in a buffer containing 75 mM mannitol, 225 mM sucrose, 0.5 mM EGTA, 2 mM MOPS, 0.1% BSA (pH = 7.4) at a 10:1 buffer to liver (v/w) ratio.²⁴ The liver homogenate was centrifuged at 1000 g for 10 minutes at 4°C to remove intact cells, cell debris, and nuclei. The supernatants were further centrifuged (10000 g, 4°C, 10 minutes) to precipitate the heavy membrane fractions (mitochondria).²⁴ This step was repeated three times using fresh buffer medium. As mentioned, all manipulations for liver mitochondria isolation were performed at 4°C or on ice to minimize mitochondrial injury.²⁴

Mitochondrial dehydrogenase activity (MTT assay)

The 3-(4, 5-dimethylthiazol-2-yl)-2, the 5-diphenyltetrazolium bromide (MTT) assay was applied as a colorimetric method for determination of mitochondrial dehydrogenase activity in isolated liver mitochondria.^{21,26} For this purpose,

mitochondrial suspension in a buffer containing 320 mM sucrose, 1 mM EDTA, and 10 mM Tris-HCl (pH=7.4), was incubated with 40 μ l of the MTT solution (5 mg/ml) at 37°C for 30 minutes. The product of purple formazan crystals was dissolved in 1 ml dimethyl sulfoxide (DMSO). Then, 100 μ l of dissolved formazan was added to 96 well plate and the optical density at 570 nm was measured with an EPOCH plate reader (BioTek® Instruments, Highland Park, USA).²¹ Samples protein concentrations were determined by the Bradford method.²⁷

Reactive oxygen species (ROS) in isolated liver mitochondria

The mitochondrial ROS measurement was performed using the fluorescent probe DCFH-DA.^{24,28} Briefly, isolated liver mitochondria were incubated in a buffer containing 125 mM sucrose, 65 mM KCl, 5 mM sodium succinate, and 10 mM HEPES (pH=7.2).²⁴ Following this step, DCFH-DA was added (Final concentration of 10 μ M) to mitochondria and incubated for 30 min at 37°C in dark. Then, the fluorescence intensity of DCF was measured using an FLUOstar Omega® multifunctional fluorescent microplate reader ($\lambda_{\text{excitation}}=485$ nm and $\lambda_{\text{emission}}=525$ nm).²⁴

Mitochondrial membrane potential

Mitochondrial uptake of the cationic fluorescent dye, rhodamine 123, was used for the estimation of mitochondrial membrane potential.^{24,28} The mitochondrial fractions (0.5 mg protein/ml) were incubated with 10 μ M of rhodamine 123 in a buffer containing 125 mM sucrose, 65 mM KCl, 5 mM sodium succinate, and 10 mM HEPES (pH=7.2) (30 min, 37°C). After centrifugation (15000 g, 5 min, 4 °C), the fluorescence intensity of samples was monitored using a FLUOstar Omega® multifunctional fluorescent microplate reader at the excitation and emission wavelength of 485 nm and 525 nm, respectively.^{24,28}

Mitochondrial glutathione (GSH) content

Mitochondrial GSH level was determined by a spectrophotometric method using 5, 50-dithiobis-2-nitrobenzoic acid (DTNB).²⁴ Briefly, the mitochondrial suspension was treated with ice-cooled trichloroacetic acid (10% w/v) to extract mitochondrial glutathione. The mixture was centrifuged (15000 g for 10 min, 4°C) to remove denatured proteins.²⁴ Afterward, 100 μ l of DTNB (0.04% in phosphate buffer) was added and the intensity of the produced yellow color was recorded at 412 nm with an ultraviolet spectrophotometer (Pharmacia biotech, Uppsala, Sweden).²¹

Mitochondrial Swelling assay

Mitochondrial swelling was measured as previously described.²⁴ The isolated mitochondria (0.5 mg protein/ml) were suspended in a buffer containing 125 mM sucrose, 65 mM KCl, 5 mM sodium succinate, and 10 mM HEPES (pH=7.2). Light absorbance at 540 nm was measured at the two-time points (10 and 70 minutes) at 25°C.²⁴ It is accepted that a decreased light absorbance is consistent with an increase in mitochondrial volume. Hence, as mitochondria are more swelled, the differences between light absorbance of two-time points are higher. The differences between the absorbance of samples were assessed ($\Delta\text{OD}^{540\text{ nm}}$) and compared in different experimental groups.²⁴

Lipid peroxidation in liver mitochondria

Thiobarbituric acid reactive substances (TBARS) were measured as an index of lipid peroxidation in isolated liver mitochondria by a previously reported procedure.²⁴ Isolated mitochondria were washed to remove sucrose in an ice-cold buffer of MOPS-KCl (50 mM MOPS, 100 mM KCl, pH=7.4), and re-suspended in fresh MOPS-KCl buffer. Afterward, the mitochondrial suspension was mixed with twice its volume of a solution containing trichloroacetic acid (15% w/v), thiobarbituric acid (0.375% w/v), and 0.24 N HCl plus 0.5 mM Trolox. The mixture was heated for 15 min at 100°C.^{24,29} After centrifugation (15000 g, 10 min), the absorbance of the supernatant was assessed at 532 nm with an Epoch plate reader (BioTek® Instruments, Highland Park, USA).^{21,24}

Mitochondrial ATP level

A luciferase-luciferin-based kit (ENLITEN® from Promega) was used to assess mitochondrial ATP content.³⁰ Samples and buffer solutions were based on the kit instructions and the luminescence intensity of samples was measured at 560 nm using a FLUOstar Omega® multifunctional microplate reader.

Statistical analysis

Data are given as the Mean \pm SD. Data comparison was performed by the one-way analysis of variance (ANOVA) with Tukey's multiple comparisons as the *post hoc* test. Differences were considered statistically significant when $P < 0.05$.

Results

Adverse effects of NMT on mice liver was biochemically evident as elevated plasma biomarkers of liver injury (Figure 2). It was found that plasma ALT, LDH, and AST levels were significantly increased in NMT-treated mice (Figure 2).

Evaluation of liver mitochondria isolated from NMT-treated animals revealed a decrease in SDA,

and mitochondrial membrane potential collapse (Figure 3). Moreover, mitochondrial swelling and

reactive oxygen species were increased in liver mitochondria of NMT-treated animals (Figure 3).

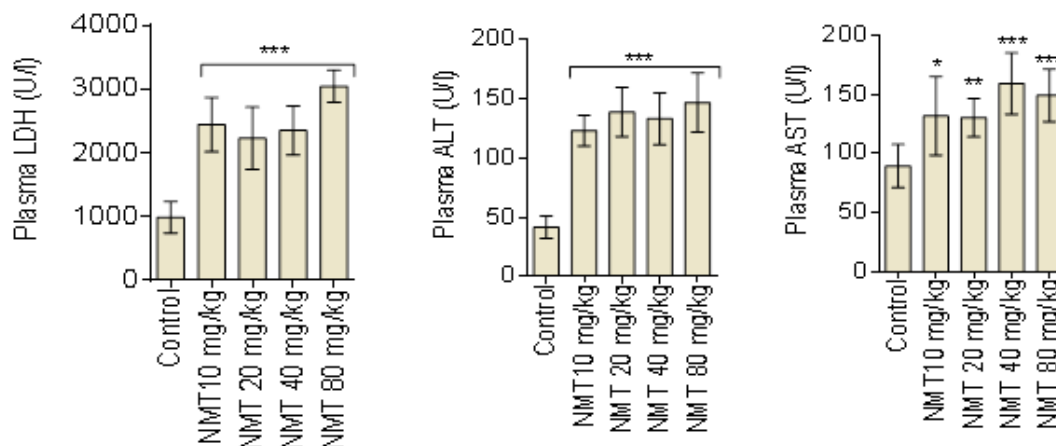


Figure 2. Plasma biomarkers of liver injury in N-methyl thiourea-treated mice. NMT: N-methyl thiourea. Data are given as Mean±SD (n=8). Asterisks indicate significantly different as compared with control (*P<0.05, **P<0.01, ***P<0.001).

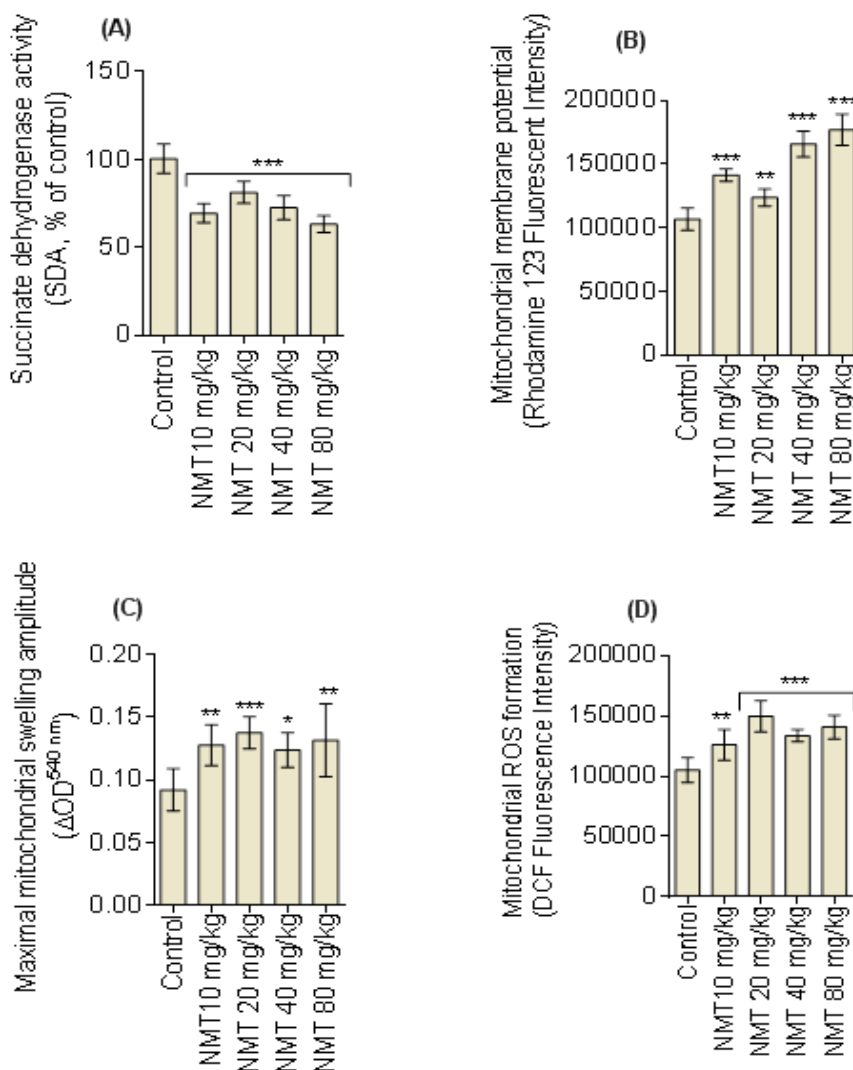


Figure 3. Effect of N-methyl thiourea (NMT) on liver mitochondria isolated from drug-treated mice. NMT decreased SDA activity (A), collapsed mitochondrial membrane potential (B), increased mitochondrial swelling (C), and enhanced ROS formation (D), in mice liver mitochondria. Data are given as Mean±SD (n=8). Asterisks indicate significantly different as compared with control (*P<0.05, **P<0.01, ***P<0.001).

Further evaluation of liver mitochondria isolated from NMT-treated mice revealed decreased mitochondrial glutathione reservoirs and ATP content (Figure 4). Mitochondrial lipid peroxidation was also increased in NMT-treated (40 and 80 mg/kg) animals (Figure 4).

A marked decrease in mitochondrial succinate dehydrogenase activity (MTT assay) was detected when isolated liver mitochondria were incubated with different NMT concentrations (Figure 5).

Concentrations of NMT greater than 10 μ M, significantly decreased mitochondrial succinate dehydrogenase activity (Figure 5). Further assessment of liver mitochondria treated with NMT, revealed a marked increase in mitochondrial ROS formation (Figure 5). Moreover, NMT caused a collapse in mitochondrial membrane potential (Figure 5), and an increase in mitochondrial swelling (Figure 5).

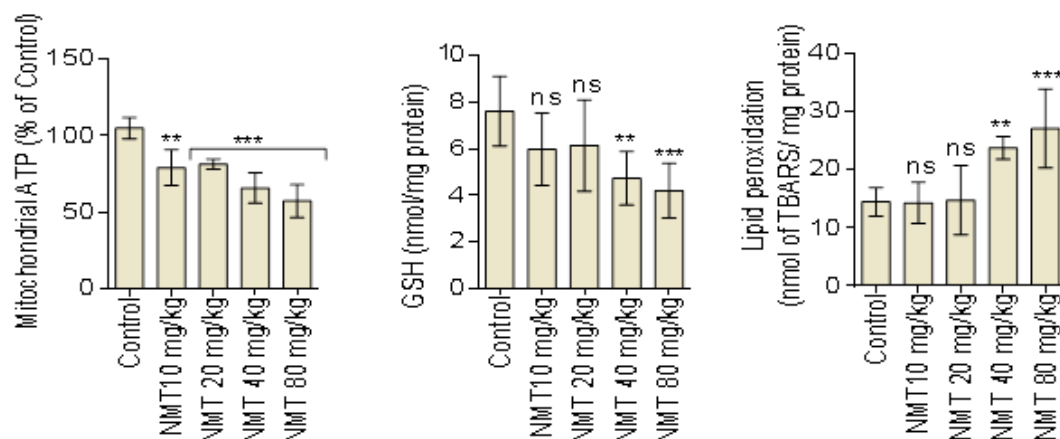


Figure 4. Liver mitochondrial ATP level, glutathione content, and mitochondrial lipid peroxidation in NMT-treated mice. NMT: N-methyl thiourea.

Data are given as Mean \pm SD (n=8). Asterisks indicate significantly different as compared with control (*P<0.05, **P<0.01, ***P<0.001). ^{ns}: not significant as compared to control (P > 0.05).

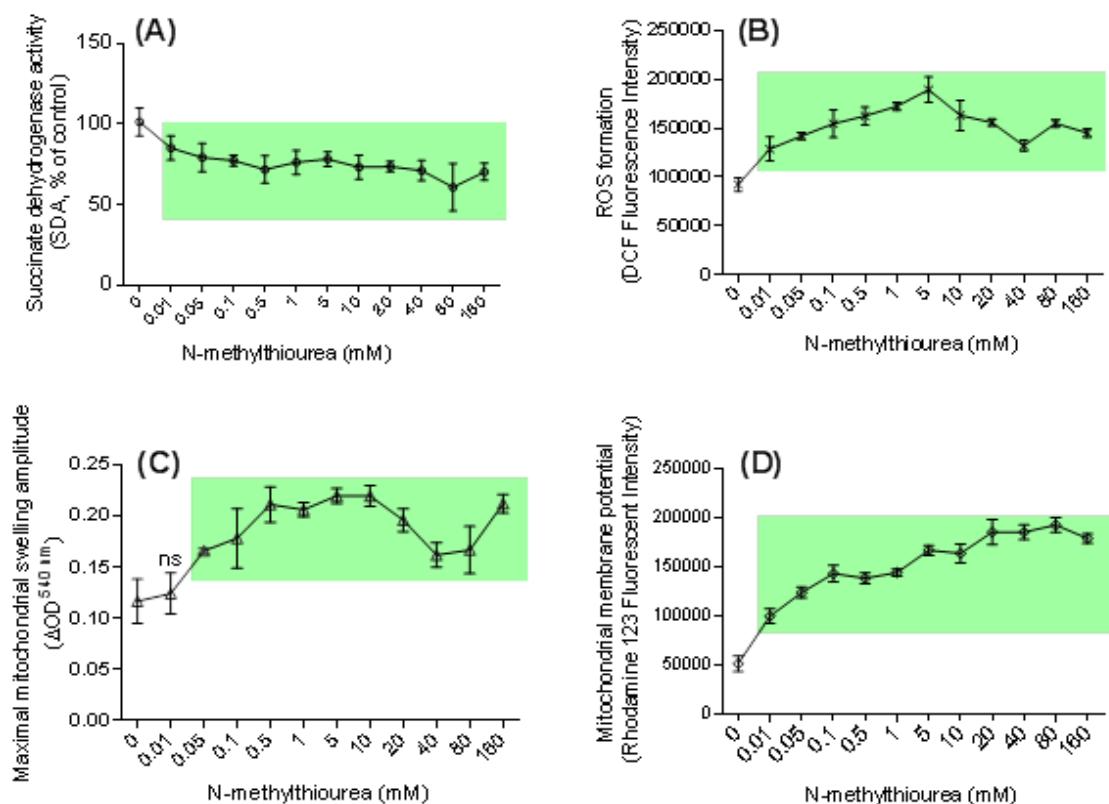


Figure 5. Effect of N-methyl thiourea (NMT) on isolated mice liver mitochondria. NMT caused a decrease in SDA activity (A), ROS formation (B), mitochondrial swelling (C), and collapse in mitochondrial membrane potential (D), in isolated mice liver mitochondria. Data are given as Mean \pm SD (n=8). Data in colored boxes are significantly different as compared with 0 mM NMT (P < 0.001). ^{ns}: not significant as compared to control (0 mM NMT) (P > 0.05).

It was also detected that mitochondrial glutathione stores and ATP level were decreased in NMT-treated liver mitochondria (Figure 6). NMT administration (0.5-160 mM) also increased mitochondrial lipid peroxidation (Figure 6).

Discussion

Antithyroids hepatotoxicity is a clinical complication.^{31,32} Methimazole is the most convenient antithyroid drug in human. However, there are several cases of liver injury induced by this drug.^{12,33,34} There is no clear idea on the mechanism of methimazole-induced liver injury. However, methimazole reactive metabolites seem to be involved in the liver injury induced by this drug.^{14-16,35} The ring cleavage metabolite of methimazole, NMT is a postulated hepatotoxic intermediate of this drug.¹⁶ The exact mechanism of cell injury induced by NMT has not been revealed so far. Previously, we found that liver enzyme induction drastically deteriorated methimazole-induced hepatotoxicity.³⁵ All these data indicate the importance of methimazole reactive metabolites in the hepatotoxic effects of this drug.

Mitochondrial dysfunction is contributed in the mechanism of cellular injury induced by several xenobiotics.^{20,36,37} Mitochondria are also major potential targets for many drugs to induce liver injury.³⁷ Mitochondrial injury

plays a crucial role in cell death and apoptosis process.^{38,39} Hence, drugs which affect this vital organelle might finally cause organ failure.

Previous investigations indicated that anti-thyroid drugs such as methimazole might affect hepatocytes mitochondria as revealed by a collapse in mitochondrial membrane potential ($\Delta\Psi_m$).^{19,23} The effects of methimazole on cellular mitochondria might be attributed to its reactive metabolites. Previous structure-toxicity relations suggest NMT as a hepatotoxic metabolite for methimazole.¹⁶

In the current investigation, we found that NMT caused significant damage toward liver mitochondria. Hence, the mitochondrial injury might serve as a mechanism for methimazole reactive metabolites to induce liver injury (Figure 7).

It has been found that NMT is further metabolized by FMO or CYP enzymes to reactive sulfonic and sulfenic acid species (Figure 7).⁴⁰ Sulfonic and sulfenic acids are reactive electrophilic species which are capable of interacting with several intracellular targets such as different proteins.^{41,42} In the current study, we found that NMT administration significantly damaged liver mitochondria both *in vitro* and *in vivo*. NMT reactive metabolites might also be involved in the mitochondrial injury induced by this chemical *in vivo* (Figure 7).

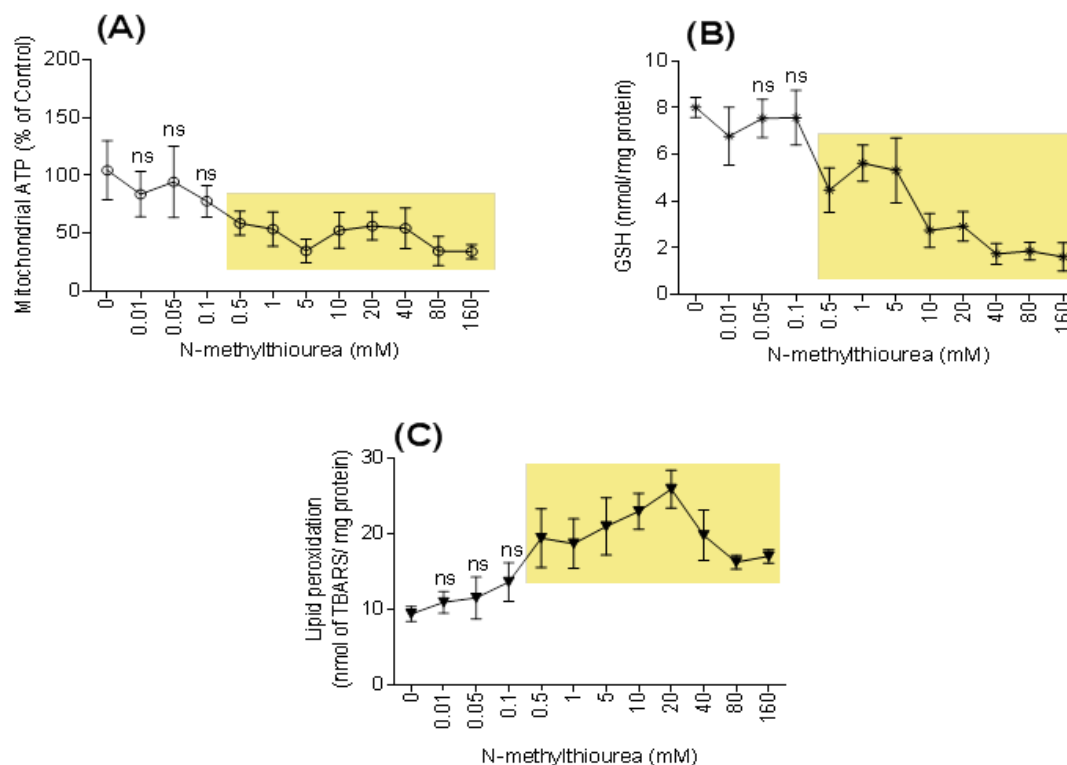


Figure 6. Effect of N-methyl thiourea (NMT) on ATP level (A), glutathione content (B), and mitochondrial lipid peroxidation (C). Data are given as Mean \pm SD (n=8). Data in the colored box are significantly different as compared with control (0 mM NMT) ($P < 0.001$). ns: not significant as compared to control (0 mM NMT) ($P > 0.05$).

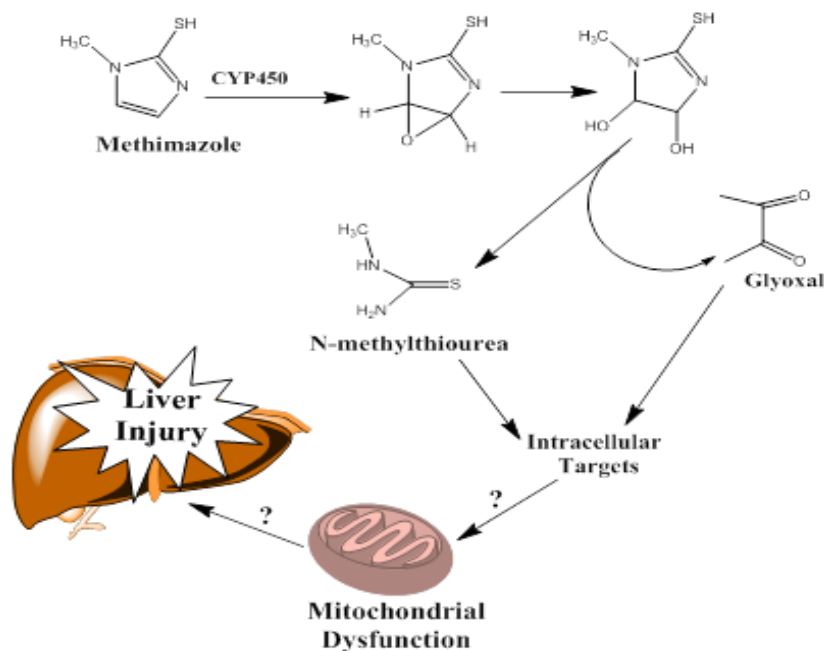


Figure 7. Methimazole metabolism and its proposed reactive metabolites in liver. Some investigations mention the role of N-methyl thiourea and its consequent metabolites in methimazole-induced hepatotoxicity.

Glyoxal is another metabolite of methimazole.^{14,16,40} Glyoxal is a well-known mitochondrial toxin.⁴³⁻⁴⁵ It has been reported that a part of methimazole hepatotoxicity might be mediated by glyoxal.⁴⁶ Hence, methimazole metabolites might synergistically disturb hepatocytes mitochondrial function (Figure 7).

Propylthiouracil (PTU) is also a thionamide antithyroid drug with several cases of severe hepatotoxicity.⁴⁷⁻⁵⁰ Mitochondria seems to be a target for PTU to induce cellular damage and toxicity. It has been found that shape and size of mitochondria were changed to giant mitochondria (megamitochondria) in PTU-induced hepatic injury.⁵¹ Furthermore, it has been observed that the inner and outer membrane of mitochondria were fragmented and their matrices were lytic in PTU-induced hepatotoxicity.⁵¹ The direct effect of PTU on isolated liver mitochondria is under investigation in our department (Unpublished data). There is no investigation on the role of drug metabolism in the PTU-induced liver injury. The involvement of the thionamide metabolite of PTU and its effects on vital organelles such as mitochondria might clear the mechanisms of hepatotoxicity induced by this drug.

The toxic properties of several other thionamide-based structures are well known.^{52,53} Thiourea is the parent compound for many drugs and industrial agents. Some antituberculosis agents, centrally acting histamine H₃ antagonists, and anti-HIV reverse transcriptase (RT) inhibitors, are among thiourea-containing drugs.^{47-50,54,55} Interestingly, the hepatic injury is a serious adverse effect associated with the mentioned drugs.^{56,57}

Hence, the thiourea chemical structure and its potential adverse effects toward liver mitochondria might play a role in the mechanism of hepatotoxicity induced by these drugs.^{53,56}

Conclusion

Collectively, our data indicate that hepatocytes mitochondria might be a potential target for NMT-induced toxicity (Figure 7). These data could help to clear the mechanism of hepatotoxicity induced by methimazole and other thionamide-based drugs. Furthermore, it might help to develop therapeutic or preventive strategies in drug development and pharmacotherapy.

Acknowledgments

The Current investigation was financially supported by the office of Vice-Chancellor of Research Affairs of Shiraz University of Medical Sciences (Grant number: 95-01-36-11415). The authors also gratefully acknowledge the instrumental facility providing of Pharmaceutical Sciences Research Center (PSRC) of Shiraz University of Medical Sciences for this study.

Conflict of interests

The authors claim that there is no conflict of interest.

References

- Grant LM, Rockey DC. Drug-induced liver injury. *Curr Opin Gastroenterol.* 2012;28(3):198-202. doi:10.1097/MOG.0b013e3283528b5d
- Hayashi PH, Chalasani NP. Increasing impact

- of drug-induced liver injury. *Clin Liver Dis.* 2015;5(6):136-8. doi:10.1002/cld.469
3. Akmal A, Kung J. Propylthiouracil, and methimazole, and carbimazole-related hepatotoxicity. *Expert Opin Drug Saf.* 2014;13(10):1397-406. doi:10.1517/14740338.2014.953796
 4. Woeber KA. Methimazole-induced hepatotoxicity. *Endocr Pract.* 2002;8(3):222-4. doi:10.4158/EP.8.3.222
 5. Emiliano AB, Governale L, Parks M, Cooper DS. Shifts in propylthiouracil and methimazole prescribing practices: antithyroid drug use in the United States from 1991 to 2008. *J Clin Endocrinol Metab.* 2010;95(5): 2227-33. doi:10.1210/jc.2009-2752
 6. Cooper DS. Antithyroid drugs. *N Engl J Med.* 2005;352(9):905-17. doi:10.1056/NEJMra042972
 7. Nelson P, Gossain VV. Prolonged Treatment With Antithyroid Drugs: How Long to Treat Safely ; Months, Years, or a Lifetime? *Endocrinologist.* 2010;20(5):217-9. doi:10.1097/TEN.0b013e3181f47fb2
 8. Livadas S, Xyrafis X, Economou F, Boutzios G, Christou M, Zerva A, et al. Liver failure due to antithyroid drugs: report of a case and literature review. *Endocrine.* 2010;38(1):24-8. doi:10.1007/s12020-010-9348-y
 9. Cooper DS. The side effects of antithyroid drugs. *Endocrinologist.* 1999;9(6):457-78. doi:10.1097/00019616-199911000-00008
 10. Karras S, Tzotzas T, Krassas GE. Toxicological considerations for antithyroid drugs in children. *Expert Opin Drug Metab Toxicol.* 2011;7(4):399-410. doi:10.1517/17425255.2011.557068
 11. Gallelli L, Staltari O, Palleria C, De Sarro G, Ferraro M. Hepatotoxicity induced by methimazole in a previously healthy patient. *Curr Drug Saf.* 2009;4(3):204-6. doi:10.2174/157488609789006912
 12. Yang J, Zhong J, Zhou L-Z, Hong T, Xiao X-H, Wen G-B. Sudden onset agranulocytosis and hepatotoxicity after taking methimazole. *Intern Med.* 2012;51(16):2189-92. doi:10.2169/internalmedicine.51.7845
 13. Wang M-T, Lee W-J, Huang T-Y, Chu C-L, Hsieh C-H. Antithyroid drug-related hepatotoxicity in hyperthyroidism patients: a population-based cohort study. *Br J Clin Pharmacol.* 2014;78(3):619-29. doi:10.1111/bcp.12336
 14. Heidari R, Niknahad H, Jamshidzadeh A, Eghbal MA, Abdoli N. An overview on the proposed mechanisms of antithyroid drugs-induced liver injury. *Adv Pharm Bull.* 2015;5(1):1-11. doi:10.5681/apb.2015.001
 15. Heidari R, Niknahad H, Jamshidzadeh A, Abdoli N. Factors affecting drug-induced liver injury: antithyroid drugs as instances. *Clin Mol Hepatol.* 2014;20(3):237-48. doi:10.3350/cmh.2014.20.3.237
 16. Mizutani T, Yoshida K, Murakami M, Shirai M, Kawazoe S. Evidence for the involvement of N-methylthiourea, a ring cleavage metabolite, in the hepatotoxicity of methimazole in glutathione-depleted mice: structure-toxicity and metabolic studies. *Chem Res Toxicol.* 2000;13(3):170-6. doi:10.1021/tx990155o
 17. Walgren JL, Mitchell MD, Thompson DC. Role of metabolism in drug-induced idiosyncratic hepatotoxicity. *Crit Rev Toxicol.* 2005;35(4):325-61. doi:10.1080/10408440590935620
 18. Xie F, Zhou X, Genter MB, Behr M, Gu J, Ding X. The Tissue-Specific Toxicity of Methimazole in the Mouse Olfactory Mucosa Is Partly Mediated through Target-Tissue Metabolic Activation by CYP2A5. *Drug Metab Dispos.* 2011;39(6):947-51. doi:10.1124/dmd.110.037895
 19. Heidari R, Babaei H, Eghbal M. Mechanisms of methimazole cytotoxicity in isolated rat hepatocytes. *Drug Chem Toxicol.* 2013;36(4):403-11. doi:10.3109/01480545.2012.749272
 20. Labbe G, Pessayre D, Fromenty B. Drug-induced liver injury through mitochondrial dysfunction: mechanisms and detection during preclinical safety studies. *Fundam Clin Pharmacol.* 2008;22(4):335-53. doi: 10.1111/j.1472-8206.2008.00608.x
 21. Niknahad H, Heidari R, Alzuhairi AM, Najibi A. Mitochondrial dysfunction as a mechanism for pioglitazone-induced injury toward HepG2 cell line. *Pharm Sci.* 2015;20(4):169-74.
 22. Sakamoto T, Kondo K, Kashio A, Suzukawa K, Yamasoba T. Methimazole-induced cell death in rat olfactory receptor neurons occurs via apoptosis triggered through mitochondrial cytochrome c-mediated caspase-3 activation pathway. *J Neurosci Res.* 2007;85(3):548-57. doi:10.1002/jnr.21155
 23. Heidari R, Babaei H, Eghbal MA. Ameliorative effects of taurine against methimazole-induced cytotoxicity in isolated rat hepatocytes. *Sci Pharm.* 2012;80:987-99. doi:10.3797/scipharm.1205-16
 24. Caro AA, Adlong LW, Crocker SJ, Gardner MW, Luikart EF, Gron LU. Effect of garlic-derived organosulfur compounds on mitochondrial function and integrity in isolated mouse liver mitochondria. *Toxicol Lett.* 2012;214(2):166-74. doi:10.1016/j.toxlet.2012.08.017
 25. Zhao P, Kalthorn TF, Slattery JT. Selective mitochondrial glutathione depletion by ethanol

- enhances acetaminophen toxicity in rat liver. *Hepatology*. 2002;36(2):326-35. doi:10.1053/jhep.2002.34943
26. Mosmann T. Rapid colorimetric assay for cellular growth and survival: application to proliferation and cytotoxicity assays. *J Immunol Method*. 1983;65(1-2):55-63. doi:10.1016/0022-1759(83)90303-4
27. Bradford MM. A rapid and sensitive method for the quantitation of microgram quantities of protein utilizing the principle of protein-dye binding. *Anal Biochem*. 1976;72(1-2):248-54. doi:10.1016/0003-2697(76)90527-3
28. Niknahad H, Jamshidzadeh A, Heidari R, Hosseini Z, Mobini K, Khodaei F, et al. Paradoxical Effect of Methimazole on Liver Mitochondria: In Vitro and In Vivo. *Toxicol Lett*. 2016;259:108-15. doi:10.1016/j.toxlet.2016.08.003
29. Caro AA, Cederbaum AI. Synergistic toxicity of iron and arachidonic acid in HepG2 cells overexpressing CYP2E1. *Mol Pharmacol*. 2001;60(4):742-52.
30. Held P. Luminescent Determination of ATP Concentrations Using the Clarity™ Luminescence Microplate Reader. *Nature Methods, Application Notes*. 2006. doi:10.1038/an1705
31. Lee KY, Lee YJ, Hong SH, Jung SK, Lee HE, Seo CJ, et al. Hepatic injury during treatment with antithyroid drugs in patients with hyperthyroidism. *J Kor Soci Endocrinol*. 2000;15(4-5):554-60.
32. Vitug AC, Goldman JM. Hepatotoxicity from antithyroid drugs. *Horm Res*. 1985;21(4):229-34. doi:10.1159/000180054
33. Yang J, Li LF, Xu Q, Zhang J, Weng WW, Zhu YJ et al. Analysis of 90 cases of antithyroid drug-induced severe hepatotoxicity over 13 years in China. *Thyroid*. 2015;25(3):278-83. doi:10.1089/thy.2014.0350
34. Ritu M, Rachna Manju G, Jacqueline J, Kenneth B. Methimazole Induced Fulminant Hepatic Failure. *Clin Case Rep*. 2014:SAT-0468-SAT-0468.
35. Heidari R, Babaei H, Roshangar L, Eghbal MA. Effects of Enzyme Induction and/or Glutathione Depletion on Methimazole-Induced Hepatotoxicity in Mice and the Protective Role of N-Acetylcysteine. *Adv Pharm Bull*. 2014;4(1):21-8. doi:10.5681/apb.2014.004
36. Chan K, Truong D, Shangari N, O'Brien PJ. Drug-induced mitochondrial toxicity. *Expert Opin Drug Metab Toxicol*. 2005;1(4):655-69. doi:10.1517/17425255.1.4.655
37. Wallace KB, Starkov AA. Mitochondrial targets of drug toxicity. *Annu Rev Pharmacol Toxicol*. 2000;40:353-88. doi:10.1146/annurev.pharmtox.40.1.353
38. Orrenius S, Gogvadze V, Zhivotovsky B. Mitochondrial Oxidative Stress: Implications for Cell Death. *Annu Rev Pharmacol Toxicol*. 2007;47:143-83. doi:10.1146/annurev.pharmtox.47.1.20505.105122
39. Ott M, Gogvadze V, Orrenius S, Zhivotovsky B. Mitochondria, oxidative stress and cell death. *Apoptosis*. 2007;12(5):913-22. doi:10.1007/s10495-007-0756-2
40. Erve JC. Chemical toxicology: reactive intermediates and their role in pharmacology and toxicology. *Expert Opin Drug Metab Toxicol*. 2006;2(6):923-46. doi:10.1517/17425255.2.6.923
41. Ikehata K, Duzhak TG, Galeva NA, Ji T, Koen YM, Hanzlik RP. Protein Targets of Reactive Metabolites of Thiobenzamide in Rat Liver In Vivo. *Chem Res Toxicol*. 2008;21(7):1432-42. doi:10.1021/tx800093k
42. Mansuy D, Dansette PM. Sulfenic acids as reactive intermediates in xenobiotic metabolism. *Arch Biochem Biophys*. 2011;507(1):174-85. doi:10.1016/j.abb.2010.09.015
43. Shangari N, Mehta R, O'Brien PJ. Hepatocyte susceptibility to glyoxal is dependent on cell thiamin content. *Chem Biol Interact*. 2007;165(2):146-54. doi:10.1016/j.cbi.2006.11.009
44. Shangari N, O'Brien PJ. The cytotoxic mechanism of glyoxal involves oxidative stress. *Biochem Pharmacol*. 2004;68(7):1433-42. doi:10.1016/j.bcp.2004.06.013
45. Yang K, Qiang D, Delaney S, Mehta R, Bruce WR, O'Brien PJ. Differences in glyoxal and methylglyoxal metabolism determine cellular susceptibility to protein carbonylation and cytotoxicity. *Chem Biol Interact*. 2011;191(1-3):322-9. doi:10.1016/j.cbi.2011.02.012
46. Heidari R, Niknahad H, Jamshidzadeh A, Azarpira N, Bazyari M, Najibi A. Carbonyl traps as potential protective agents against methimazole-induced liver injury. *J Biochem Mol Toxicol*. 2015;29(4):173-81. doi:10.1002/jbt.21682
47. Koch L. Therapy: Propylthiouracil use associated with severe hepatotoxicity in children. *Nat Rev Endocrinol*. 2010;6(8):416. doi:10.1038/nrendo.2010.96
48. Malozowski S, Chiesa A. Propylthiouracil-induced hepatotoxicity and death. Hopefully, never more. *J Clin Endocrinol Metab*. 2010;95(7):3161-3. doi:10.1210/jc.2010-1141
49. Sipe WE, Su M, Posselt A, Kim GE, Quiros JA, Rosenthal P, Propylthiouracil-associated liver failure presenting as probable autoimmune hepatitis in a child with Graves' disease. *Pediatric transplantation*, 2006;10(4):525-28.

- doi:10.1111/j.1399-3046.2006.00487.x
50. Sequeira E, Wanyonyi S, Dodia R. Severe propylthiouracil-induced hepatotoxicity in pregnancy managed successfully by liver transplantation: A case report. *J Med Case Rep.* 2011;5:461. doi:10.1186/1752-1947-5-461
51. Mete UO, Kaya M, Colakoglu S, Polat S, Tap O, Özbilgin MK, et al. Ultrastructure of the liver in the propylthiourcil induced hepatitis. *J Islam Acad Sci.* 1993;6(4):268-76.
52. Cashman JR, Hanzlik RP. Oxidation and other reactions of thiobenzamide derivatives of relevance to their hepatotoxicity. *J Org Chem.* 1982;47(24):4645-50. doi:10.1021/jo00145a008
53. Onderwater RCA, Commandeur JNM, Vermeulen NPE. Comparative cytotoxicity of N-substituted N'-(4-imidazole-ethyl)thiourea in precision-cut rat liver slices. *Toxicology.* 2004;197(2):81-91. doi:10.1016/j.tox.2003.11.014
54. Vollinga RC, Menge WMPB, Leurs R, Timmerman H. New analogs of burimamide as potent and selective histamine H3 receptor antagonists: the effect of chain length variation of the alkyl spacer and modifications of the N-thiourea substituent. *J Med Chem.* 1995;38(12):2244-50. doi:10.1021/jm00012a025
55. Nishida CR, Ortiz de Montellano PR. Bioactivation of antituberculosis thioamide and thiourea prodrugs by bacterial and mammalian flavin monooxygenases. *Chem Biol Interact.* 2011;192(1-2):21-5. doi:10.1016/j.cbi.2010.09.015
56. Onderwater RCA, Commandeur JNM, Groot EJ, Sitters A, Menge WMPB, Vermeulen NPE. Cytotoxicity of a series of mono- and di-substituted thiourea in freshly isolated rat hepatocytes: a preliminary structure-toxicity relationship study. *Toxicology.* 1998;125(2-3):117-29. doi:10.1016/S0300-483X(97)00169-8
57. Onderwater RCA, Commandeur JNM, Vermeulen NPE. Comparative cytotoxicity of N-substituted N-(4-imidazole-ethyl) thiourea in precision-cut rat liver slices. *Toxicology.* 2004;197(2):80-90. doi:10.1016/j.tox.2003.11.014